

# HOLMAC®

SINCE 1969

## HYDRAULIC POWER PACKS CATALOGUE

## «HR» MODEL

COMPACT SINGLE-STAGE/BISTAGE HYDRAULIC POWER PACK, CONSISTING OF SUBMERGED MOTOR PUMP UNIT.

OUR RADIAL PISTON PUMPS HAVE A FLOW RATE THAT CAN VARY FROM 1LT/MIN TO 7.5LT/MIN.

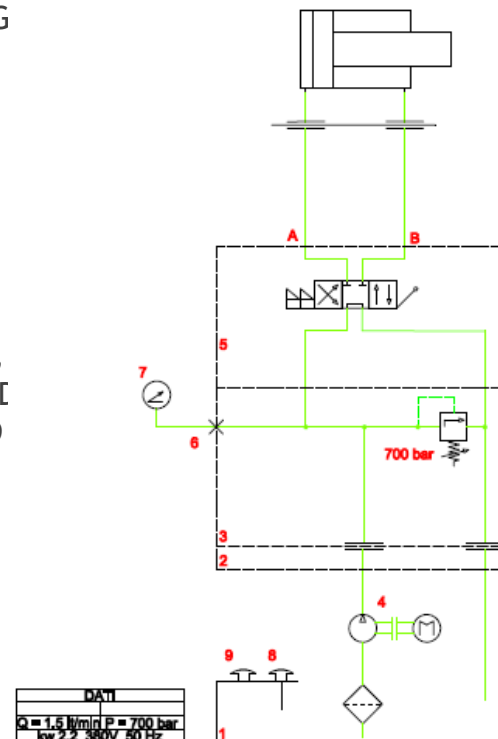
They can be fitted with electric motors from 0.75 kW to 4 kW single-phase or three-phase.

AVAILABLE IN SEVERAL VARIANTS INCLUDING BASIC P-T BLOCK, NG MAX 350BAR, MANUAL DISTRIBUTOR 4/3 700BAR.MAX.

PRESSURE 800BAR.

FIELDS OF APPLICATION: MACHINE TOOLS, WORKSHOP PRESSES ETC.

- CAN BE ASSEMBLED WITH DOUBLE PUMP IF REQUIRED.
- \* IF REQUIRED, CAN BE ASSEMBLED WITH REDUCED ECCENTRIC, WITH RELATIVE REDUCTION IN FLOW RATE OF APPROX. 20% AND INCREASE IN EFFICIENCY IN TERMS OF NOISE, SERVICE LIFE AND EFFICIENCY. DURATION AND EFFICIENCY. Translated with [www.DeepL.com/Translator](http://www.DeepL.com/Translator) (free version)



## <<HS>> MODEL

TWO-STAGE, COMPACT HYDRAULIC UNIT CONSISTING OF SUBMERGED MOTOR-PUMP UNIT.

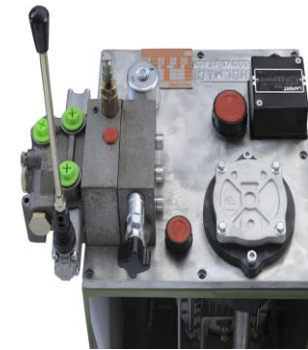
OUR VANE PUMPS GUARANTEE LOW NOISE AND HAVE A FLOW RATE THAT CAN VARY FROM 15LT/MIN TO 100LT/MIN P<sub>MAX</sub> 27 BAR. THEY ARE DIRECTLY COUPLED TO OUR RADIAL PISTON PUMPS WITH A FLOW RATE FROM 1LT/MIN TO 7.5LT/MIN P<sub>MAX</sub> 400BAR.

THE TWO PUMPS WORK IN SYNERGY THANKS TO OUR "HVD16" SEQUENCE VALVE, WHICH AUTOMATICALLY SWITCHES THE USE OF THE TWO PUMPS WHEN PRESSURE CHANGES.

ELECTRICAL MOTORS FROM 0.75kW TO 4kW SINGLE-PHASE OR THREE-PHASE.

AVAILABLE IN DIFFERENT VARIANTS THANKS TO THE MODULARITY OF THE "HVD16" VALVE. WE CAN IN FACT HAVE THE NG6, NG10, NG16 VERSION, MANUAL VALVE, P-T FLANGE, AND THE "SA" VALVE. THE "SA" VALVE HANDLES A SINGLE-ACTING ELECTRIC CONTROL WITH PRESSURE HOLDING, DEGASSING AND QUICK EXHAUST GUARANTEED UP TO 400BAR .

FIELDS OF APPLICATION: MANY, INCLUDING FILTER PRESSES, VERTICAL PRESSES AND ALL APPLICATIONS REQUIRING TWO SPEEDS WITH DIFFERENT PRESSURE STAGES, ALL AT LOW NOISE LEVELS.



## «HSE» MODEL

ALL THE ADVANTAGES OF OUR TWO-STAGE RADIAL VANE/PISTON PUMPS COUPLED WITH A STANDARD EXTERNAL MOTOR ASSEMBLY.

THE RANGE OF ELECTRIC MOTOR POWER IS EXTENDED WITH THE CLASSIC LANTERN COUPLING AND EXTERNAL MOTOR MOUNTING. THANKS TO THE USUAL "HVD16" SEQUENCE VALVE THEY ARE COMPATIBLE WITH ANY APPLICATION REQUIRING TWO FLOW RATES AND TWO PRESSURES

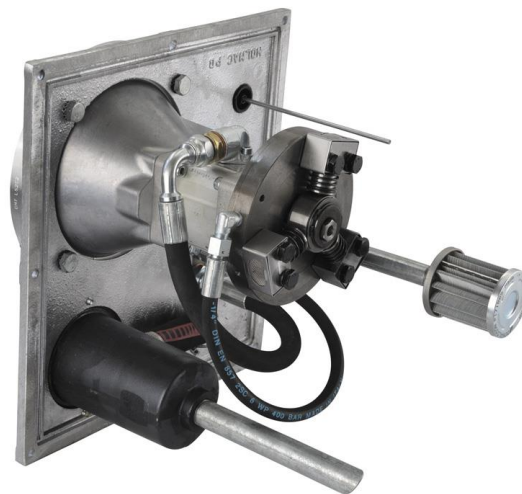


## «HAR» MODEL

IN THESE TWO-STAGE HYDRAULIC POWER PACKS, OUR RADIAL PISTON PUMPS ARE COUPLED TO A STANDARD GR2-GR3 GEAR PUMP. THIS IS TO MEET THE MOST DIVERSE MARKET REQUIREMENTS.

THE POWER RANGE OF THE ELECTRIC MOTOR IS EXTENDED WITH THE CLASSIC LANTERN COUPLING AND EXTERNAL MOTOR MOUNTING.

THANKS TO THE USUAL SEQUENCE VALVE "HVD16" THEY ARE COMPATIBLE WITH ANY APPLICATION REQUIRING TWO FLOW RATES AND TWO PRESSURES

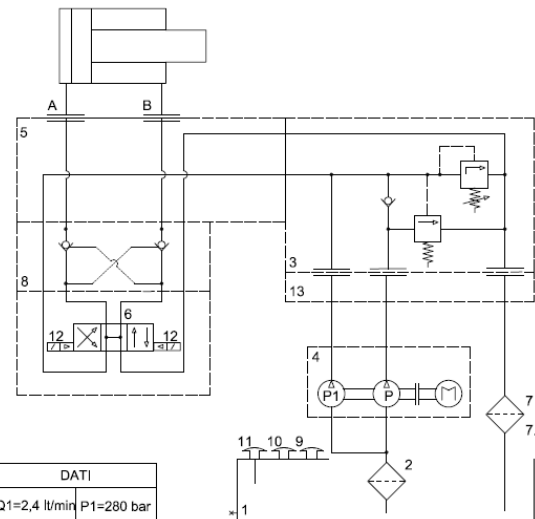


## HYDRAULIC PUMPS MODEL «HSE»

DOUBLE-STAGE 'HSE' VANE/RADIAL PISTON PUMPS CAN BE SUPPLIED WITH STANDARD LANTERN COUPLING.

MAY OR MAY NOT USE THE VANE STAGE.

THE RADIAL PISTON PUMP CAN DOUBLE THE MAXIMUM FLOW RATE IN THE SPECIAL 10-PUMP VERSION. (EXAMPLE IN PHOTO)



DATI	
Q1=2,4 lt/min	P1=280 bar
Q = 25 lt/min	P = 25bar
kw 1,5 380V 50 Hz	

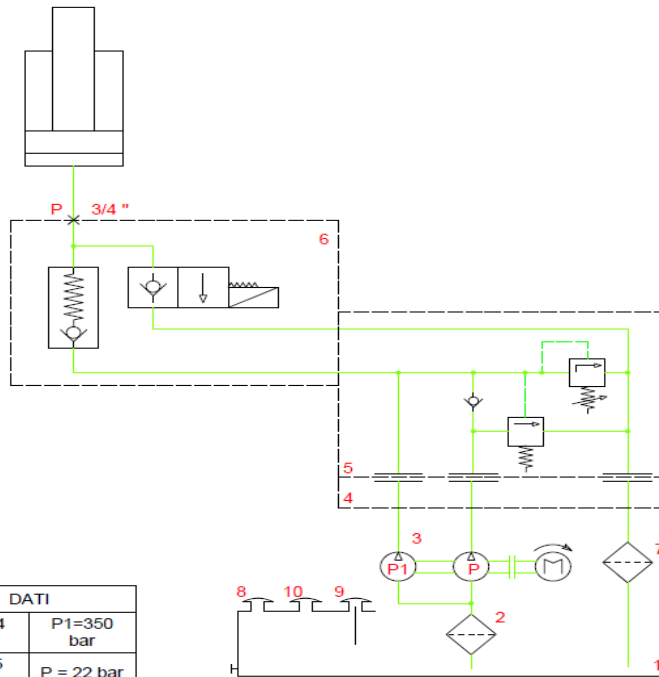
## HYDRAULIC PUMPS MODEL «HAR»

HAR' DOUBLE-STAGE GEAR/RADIAL PISTON PUMPS PROVIDE THE RELIABILITY AND MODULARITY OF GR2 AND GR3 GEAR PUMPS TOGETHER WITH THE HIGH PRESSURES OF OUR RADIAL PISTON PUMPS.



# HYDRAULIC MANIFOLD 'SA' MODEL

- ▶ IT ALLOWS MANUAL OR PNEUMATIC ELECTRICAL CONTROL OF A SIMPLE EFFECT, INTEGRATING:
- ▶ NON-return valve for PRESSURE RELIEF, DEGASSING and RAPID DISCHARGE.
- ▶ COIL VOLTAGES 24VDC, 110VDC, 220VDC. DISCHARGE CONNECTION WITH 3/4", 1", 1-1/4" METAL FILTER.
- ▶ ENSURES DEGASSING UP TO 400BAR



DATI	
Q1=2,4 lt/min	P1=350 bar
Q = 35 lt/min	P = 22 bar
kw 2,2 380V 50 Hz	



# «HR» SINGLE-STAGE RADIAL PISTON PUMPS

MOTORI KW 380V	POMPANTI-LT/MIN A 1450G/MIN					
	8X2 1LT	8X3 1,5LT	8X5 2,5LT	10X2 1,6LT	10X3 2,4LT	10X5 4LT
0,75 KW	410BAR	270BAR	165BAR	260BAR	170BAR	
1,5KW	800BAR	550BAR	330BAR	510BAR	340BAR	200BAR
2,2KW	800BAR	800BAR	480BAR	750BAR	500BAR	300BAR
3KW	800BAR	800BAR	660BAR	800BAR	680BAR	410BAR
4KW	800BAR	800BAR	800BAR	800BAR	800BAR	550BAR
MOTORI KW 380V	POMPANTI-LT/MIN A 1450G/MIN					
	12X2 2,4LT	12X3 3,6LT	12X5 6LT	14X2 3LT	14X3 4,5LT	14X5 7,5LT
0,75 KW						
1,5KW	340BAR	230BAR		275BAR		
2,2KW	600BAR	330BAR	200BAR	400BAR	270BAR	160BAR
3KW	600BAR	450BAR	270BAR	550BAR	360BAR	220BAR
4KW	600BAR	600BAR	370BAR	600BAR	480BAR	290BAR

# TWO-STAGE PUMPS: LOW PRESSURE VANE PUMPS, HIGH PRESSURE RADIAL PISTON PUMPS.

**PUMP SIZING TABLE "HS" "HSE"**

THREE-PHASE 308V 50HZ ELECTRIC MOTOR	FLOW RATE VANE PUMP MAXIMUM PRESSURE 27 BAR	POMPANTI D.8X2 1LT/MIN	POMPANTI D.10X2 1,6LT/MIN	POMPANTI D.12X2 2,4/MIN	POMPANTI D.14X2 3LT/MIN	POMPANTI D.8X3 1,5LT/MIN	POMPANTI D.10X3 2,4LT/MIN	POMPANTI D.12X3 3,6LT/MIN	POMAPNTI D.14X3 4,5LT/MIN	POMPANTI D.8X5 2,5LT/MIN	POMPANTI D.10X5 4LT/MIN
4 KW	100 LITRI/MIN.	400 BAR	400 BAR	400 BAR	400 BAR	400 BAR	400 BAR	400 BAR	400 BAR	400 BAR	400 BAR
4 KW	80 LITRI/MIN.	400 BAR	400 BAR	400 BAR	400 BAR	400 BAR	400 BAR	400 BAR	400 BAR	400 BAR	400 BAR
3 KW	60 LITRI/MIN.	400 BAR	400 BAR	400 BAR	400 BAR	400 BAR	400 BAR	400 BAR	366 BAR	400 BAR	400 BAR
2,2 KW	45 LITRI/MIN.	400 BAR	400 BAR	400 BAR	400 BAR	400 BAR	400 BAR	330 BAR	260 BAR	400 BAR	300 BAR
2,2KW	35 LITRI/MIN.	400 BAR	400 BAR	400 BAR	400 BAR	400 BAR	400 BAR	330 BAR	260 BAR	400 BAR	300 BAR
1,5 KW	25 LITRI/MIN.	400 BAR	400 BAR	340 BAR	275 BAR	400 BAR	340 BAR	/	/	330 BAR	/
1,5 KW	20 LITRI/MIN.	400 BAR	400 BAR	340 BAR	275 BAR	400 BAR	340 BAR	/	/	330 BAR	/
0,75 KW	15 LITRI/MIN.	400 BAR	/	/	/	275 BAR	/	/	/	/	/
0,75 KW	10 LITRI/MIN.	400 BAR	/	/	/	275 BAR	/	/	/	/	/

\*PRESSURES REFER TO VALVE 'SA' IN CASE OF SOLUTIONS WITH COMMERCIAL VALVES THE P.MAX. IS ADAPTED TO THESE.

# STANDARD TANKS DIMENSIONING

NOMINAL VOLUME	SIDE "A"	SIDE "B"	SIDE "H"	PAINTING SATNDARD
18 LT	200 MM	200 MM	380 MM	RAL 6011
40 LT	320 MM	320 MM	400 MM	RAL 6011
50 LT	320 MM	320 MM	500 MM	RAL 6011
64 LT	390 MM	415 MM	400 MM	RAL 6011
80 LT	390 MM	415 MM	500 MM	RAL 6011
93 LT	390 MM	600 MM	400 MM	RAL 6011
117 LT	390 MM	600 MM	500 MM	RAL 6011
175 LT	500 MM	700 MM	500 MM	RAL 6011

\*AVERAGE VOLUME OF THE MOTOR-PUMP UNIT  
10LT.\*SPECIAL PAINTING ON REQUEST.

